

# LINEA

Design: UĞUR YILMAZ



5A

# LINEA

## FAMILY

Thanks to its delicate lines, Linea stool can be used with different materials such as solid wood, solid pannel wood and marble. It has a sculptural form as a coffee table.


*İnce hatları ile Linea tabure, masif ağaç, masifpanel ahşap, mermer gibi farklı malzemelerle uyum sağlar. Tek başına sehpa olarak da heykelsi bir görünüme sahiptir.*


*Avec ses lignes fines, Linea s'adapte parfaitement aux différents matériaux tels que le bois massif, le panneau massif et le marbre. Il a une apparence sculpturale comme une table basse.*




## STOOL

> H.47 x W.40 x D.40

>  : 5 pcs

>  : 26 kg


>  : 0.30 cbm





Upholstered

## STOOL - OAK SEAT

> H.47

>  : 5 pcs

>  : 33.5 kg

>  : 0.30 cbm



Oak



# LINEA

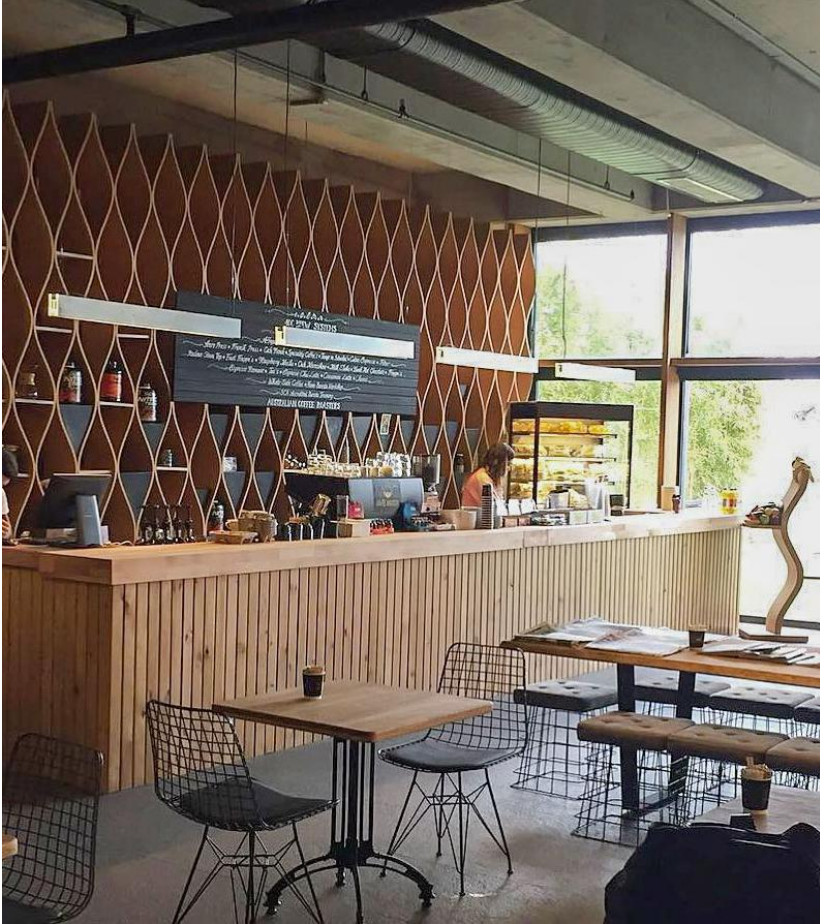
STOOL





# LINEA

## STOOL

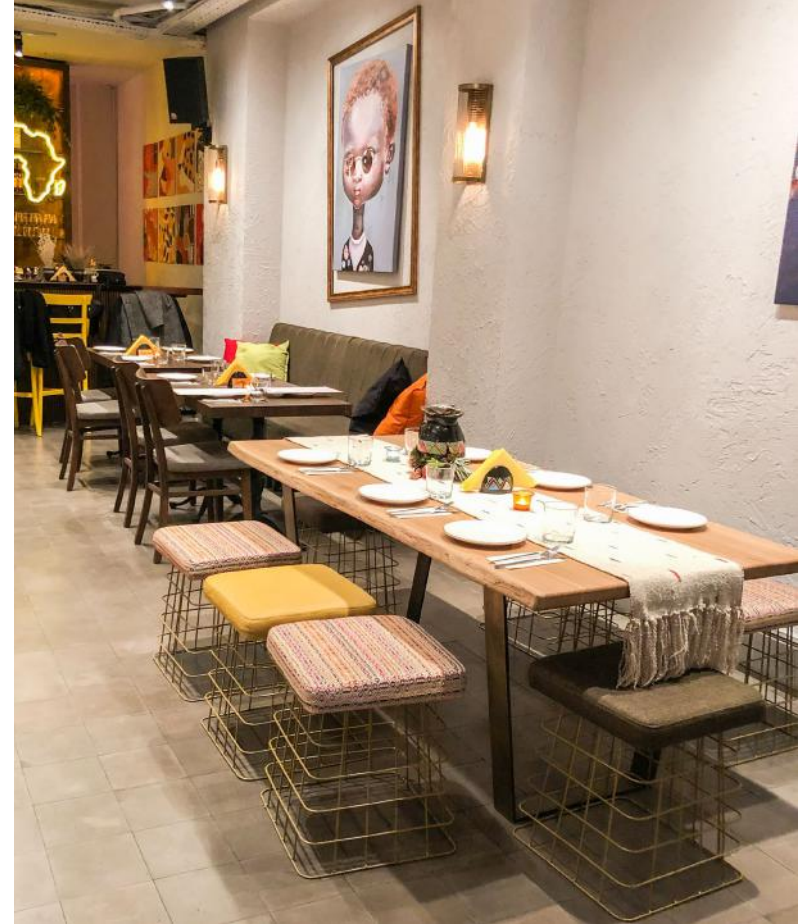


Mac Bebeköy, İstanbul / Turkey

Seat, fabric B type. Legs, metal.

*Oturum, B sınıfı kumaş. Ayaklar, metal.*

*L'assis, le fabric de classe B. Les pieds, métaIs.*



Bara La Afrika, İstanbul / Turkey

Seat, fabric B type. Legs, metal.

*Oturum, B sınıfı kumaş. Ayaklar, metal.*

*L'assis, le fabric de classe B. Les pieds, métaIs.*